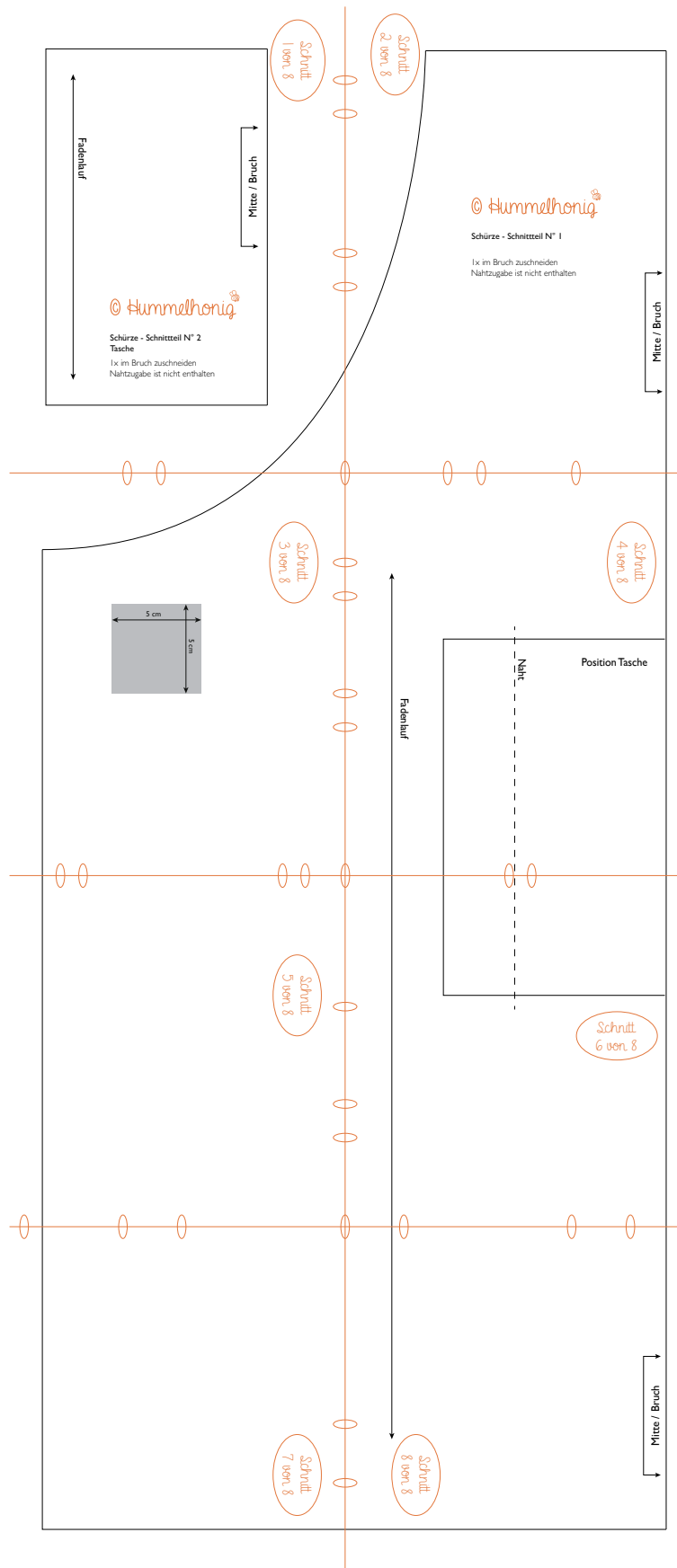
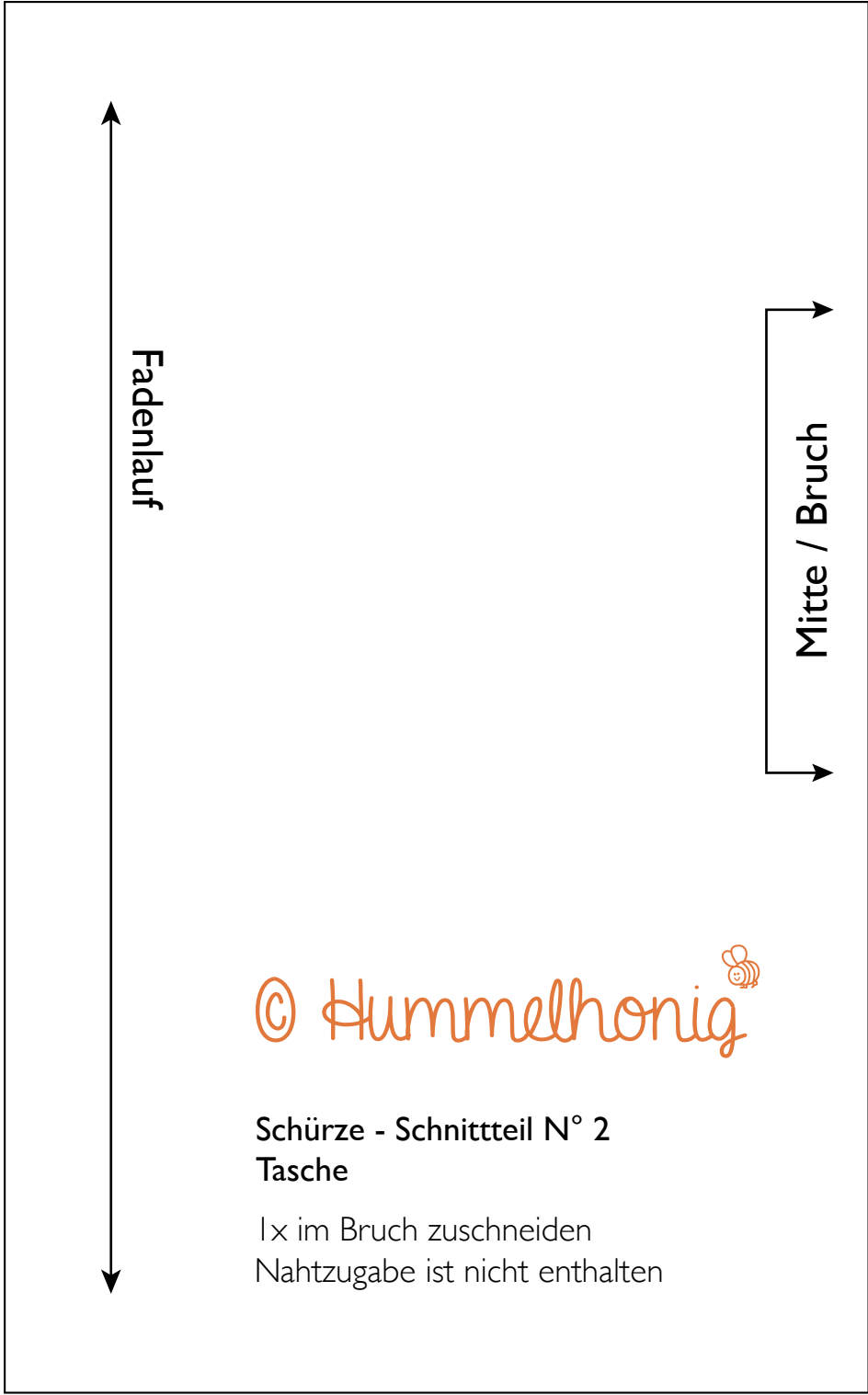


Hummelhonig

Schnittmusterplan



(verkleinerte Ansicht)



Schnitt
1 von 8



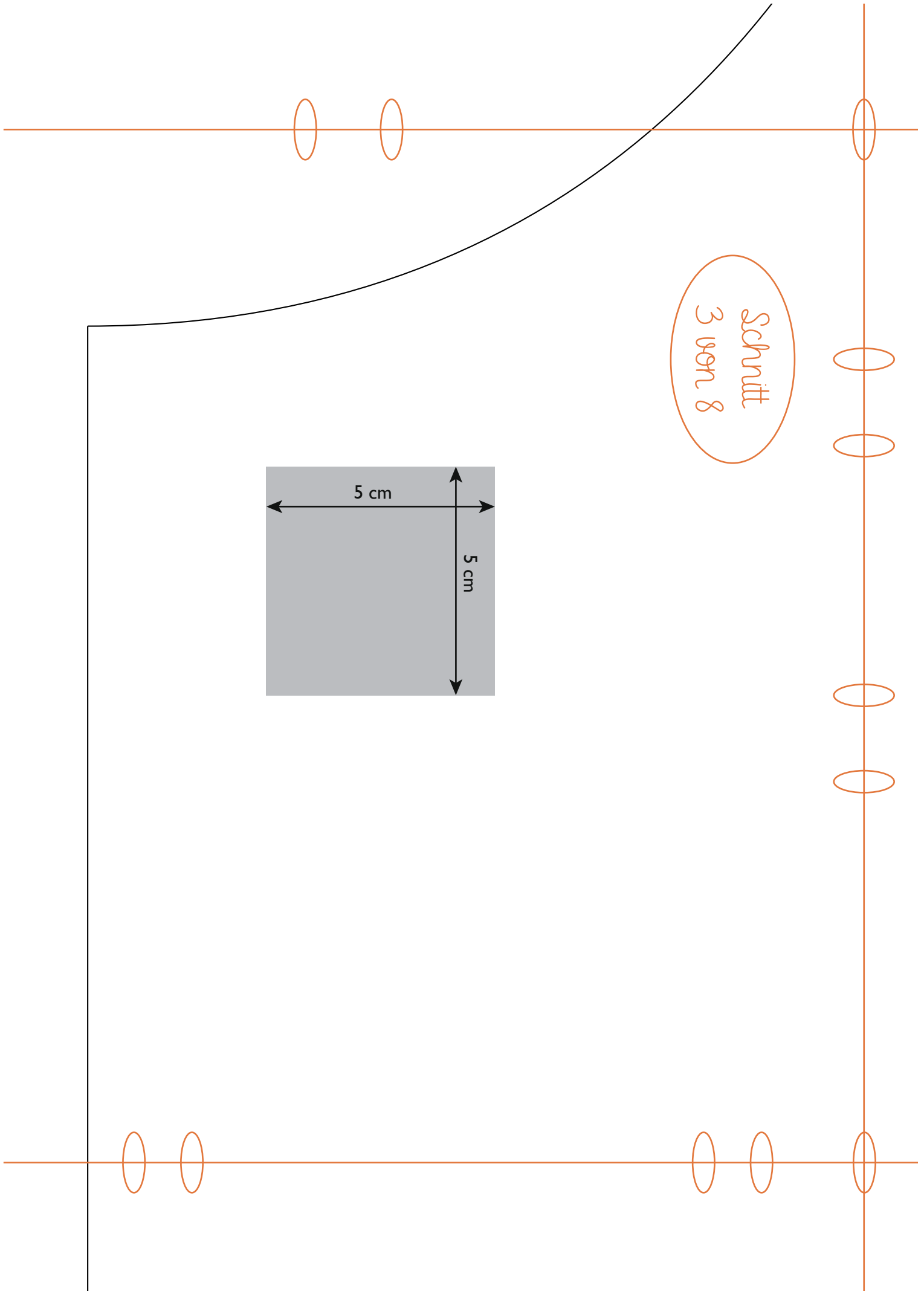
Schnitt
2 von 8

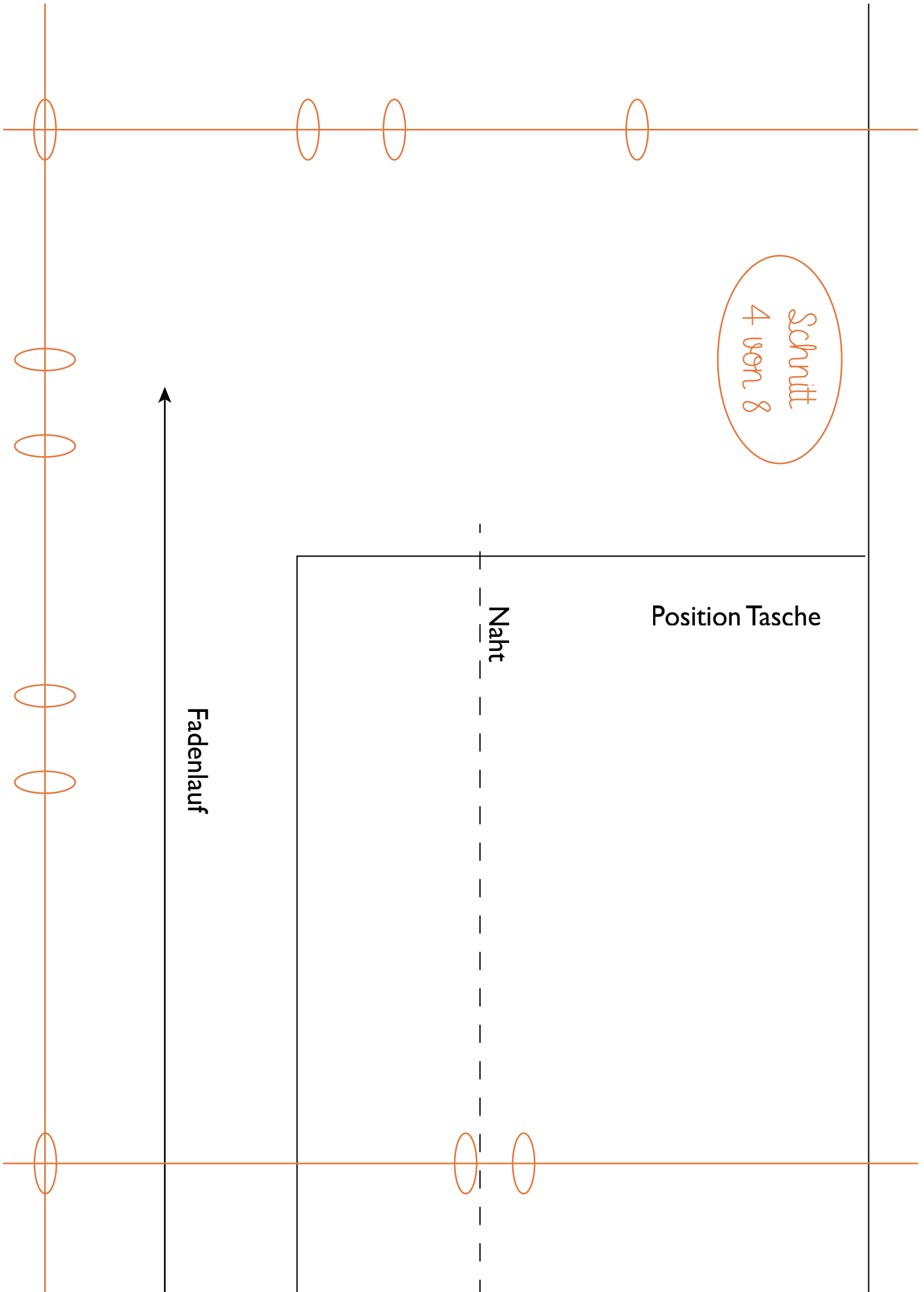
© Hummelhonig 

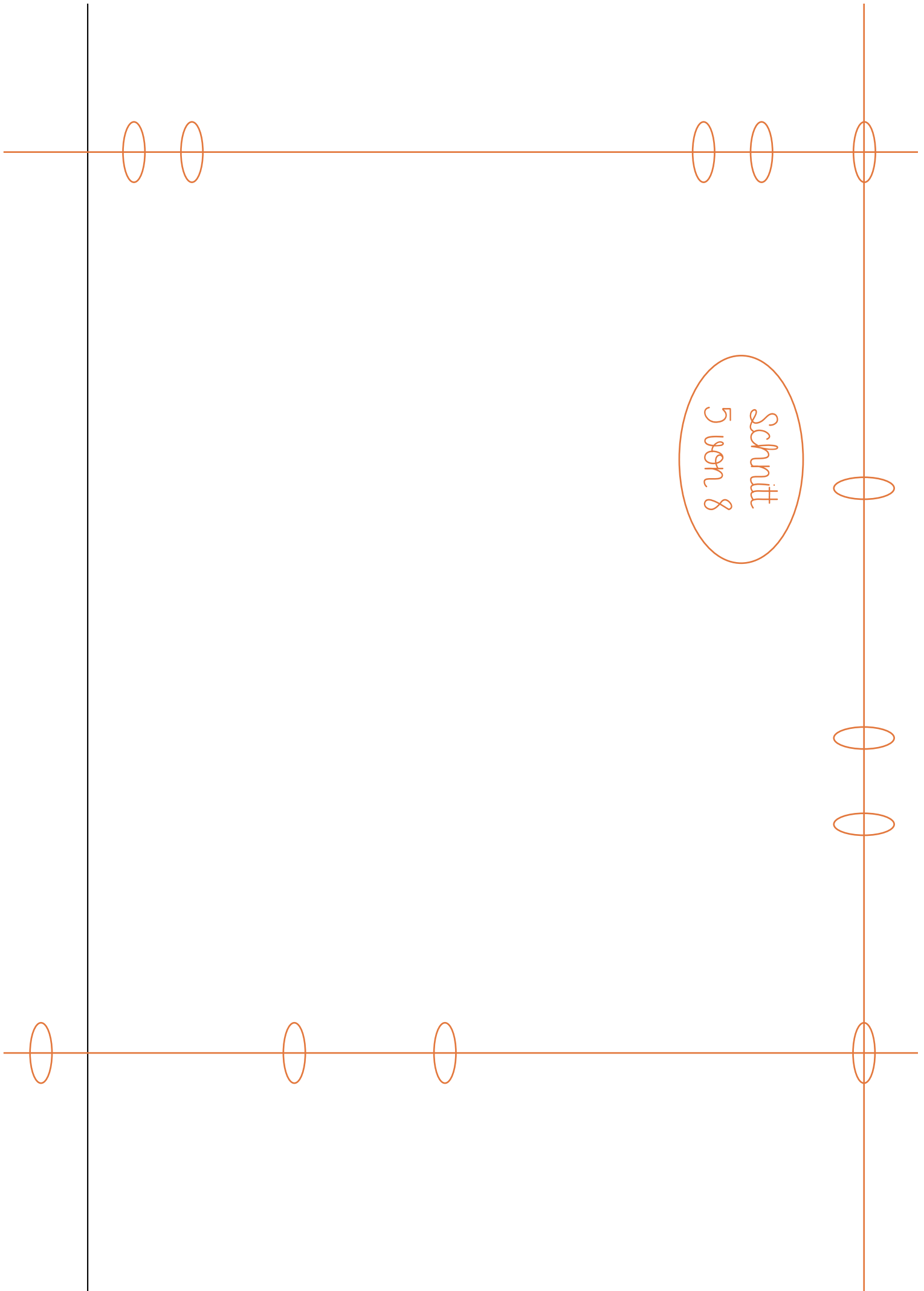
Schürze - Schnittteil N° 1

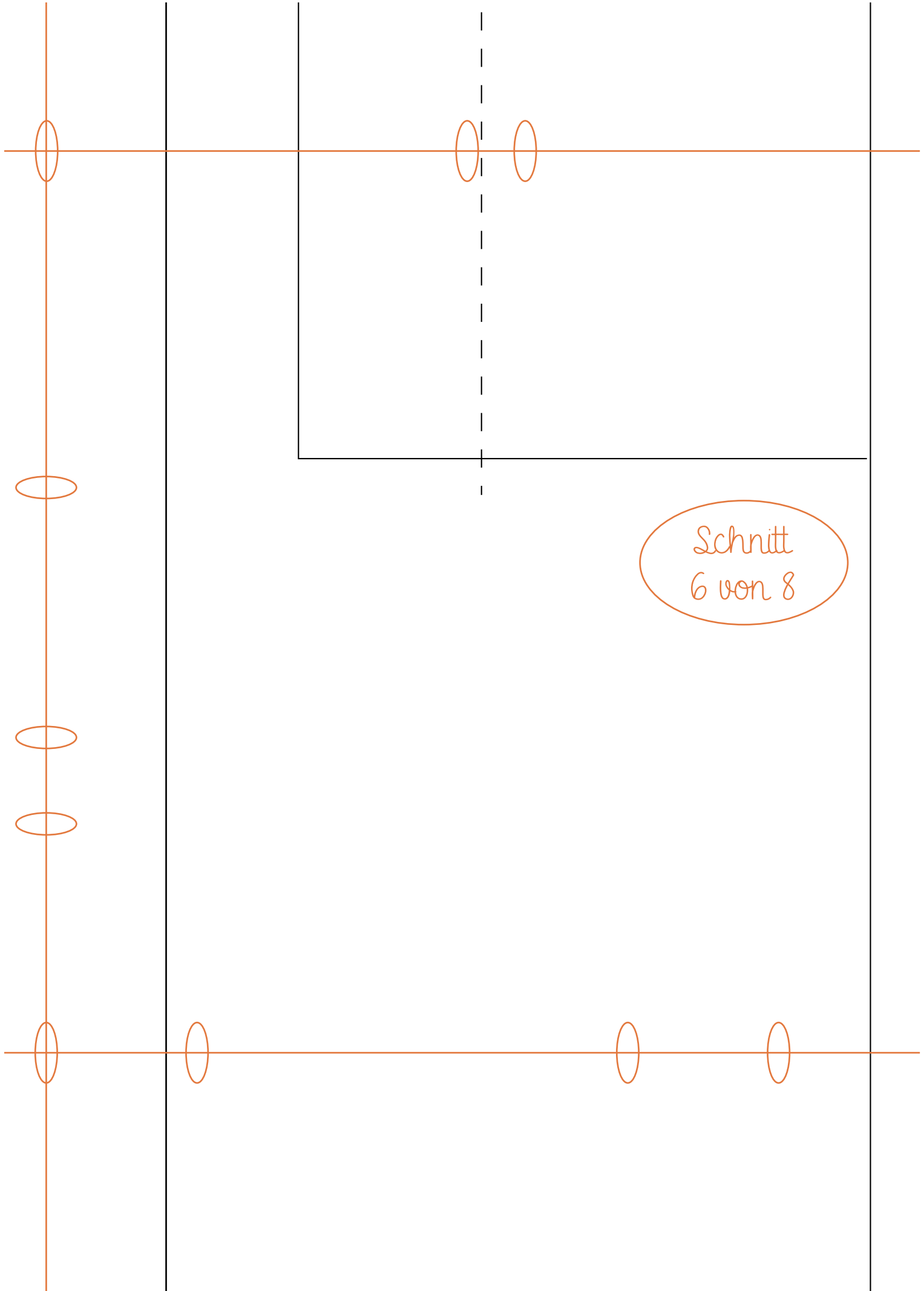
1x im Bruch zuschneiden
Nahtzugabe ist nicht enthalten

Mitte / Bruch









Schnitt
6 von 8

